

Model: Z-C1		Date: 16-Apr-15	No.: RM028049
Subject: Countermeasure for SC240/241		Prepared by: H. Someya	
From: 1st Tech Service Sect., MFP/P Tech Service Dept.			
Classification:	<input checked="" type="checkbox"/> Troubleshooting	<input type="checkbox"/> Part information	<input checked="" type="checkbox"/> Action required
	<input type="checkbox"/> Mechanical	<input type="checkbox"/> Electrical	<input type="checkbox"/> Service manual revision
	<input type="checkbox"/> Paper path	<input type="checkbox"/> Transmit/receive	<input type="checkbox"/> Retrofit information
	<input type="checkbox"/> Product Safety	<input type="checkbox"/> Other ()	<input type="checkbox"/> Tier 2

Introduction:

This is to inform about the countermeasure for SC240/241. If this symptom occurs, the LD unit which is very expensive, is damaged and is needed to be replaced. Replacing the LD unit can be a solution at the moment just to the machine back to ready to use, but cannot be a permanent countermeasure. The countermeasure is only installing the additional board described hereunder.

Symptom:

SC240 or SC241 may occur when the machine power is turned ON either by turning on the main switch or returning from the energy saving mode.

Estimated Occurrence Ratio:

0.4% per month per unit (= 1 case out of 250 units per month)

Cause:

An excessive spike in "LD ON" signal supplied to the LD unit at power up. This is because the IPU board cannot regulate the unexpected size of spike.

Countermeasure:

Production line:

Mass production has already been finished.
The IPU board is not modified.

Action required in the field:

Instead, a small board like a smart phone is additionally installed for the purpose of field fix. This is easier to handle in the field and cheaper solution.

Install the board by obtaining either kit below. There are two part numbers for distribution purpose but both kits are exactly the same. Refer to next page for the component parts.

Part Number	Description	Note
D2345000	PCB:5VSCNT:ASS'Y	Available in parts center
M0269904	PCB:5VSCNT:ASS'Y	Not available in parts center

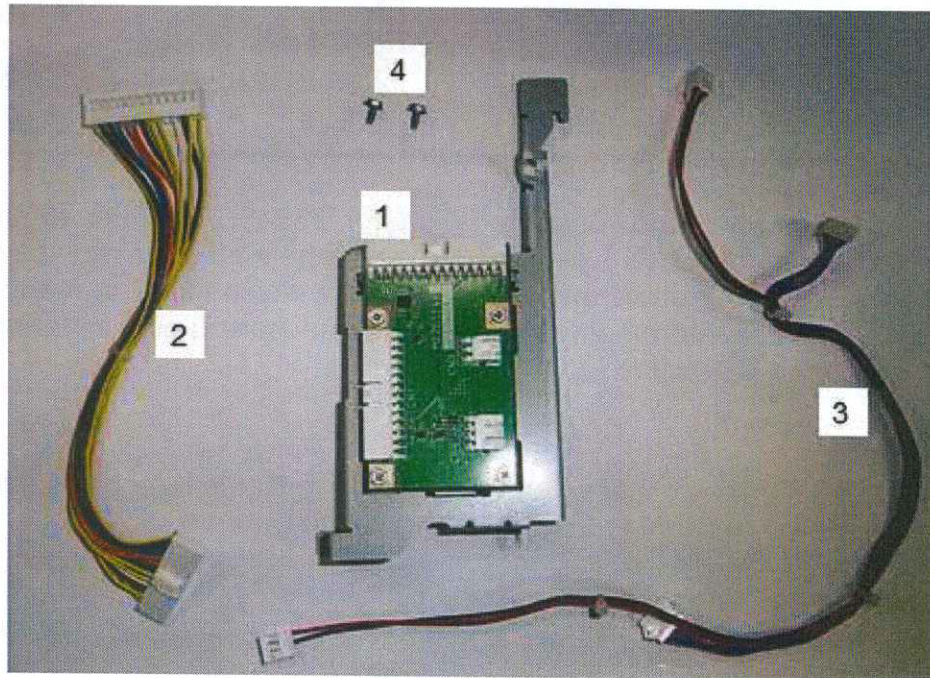
Notes

Please contact staff of your regional head quarter when you need help.

Model: Z-C1

Date: 16-Apr-15

No.: RM028049

Additional PCB Kit

No.	Description	Q'ty
1	Countermeasure PCB and Bracket	1
2	Harness 1 (Harness for PSU)	1
3	Harness 2 (Relay Harness)	1
4	Screw	2

Model: Z-C1

Date: 16-Apr-15

No.: RM028049

PROCEDURE for installing the Additional PCB Kit

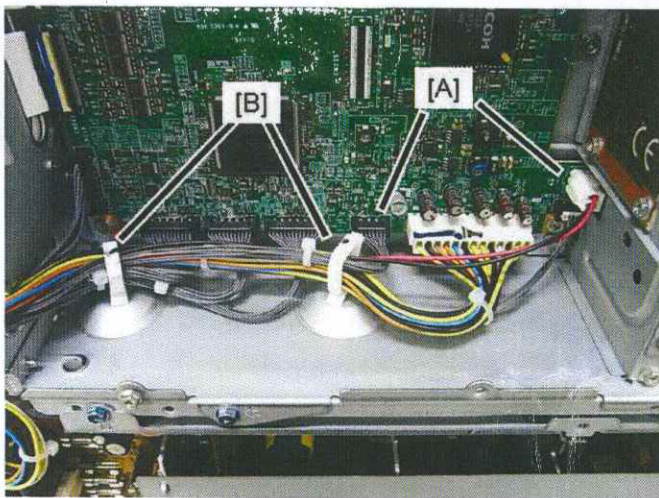
Installation Time:

Approx. 9 minutes without FAX unit

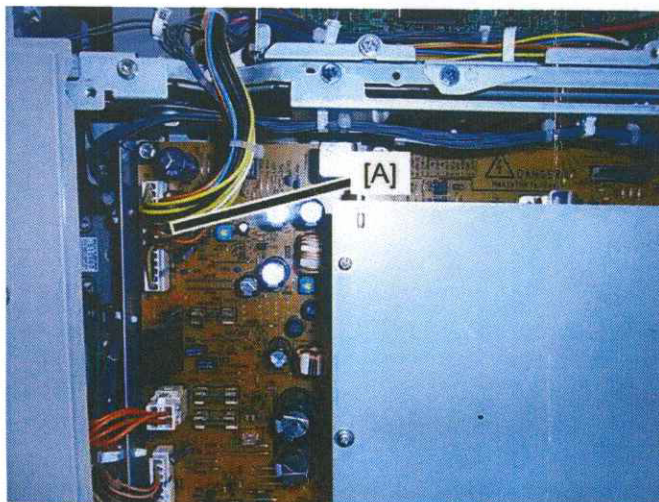
Approx. 11 minutes with FAX unit

IMPORTANT: Unplug the main power cord before you do the following procedure.

1. Remove the Rear cover (see Service Manual, pg.147).
2. Remove the upper and lower Controller Box Covers (see Service Manual, pg. 342).
3. Remove the FAX unit if installed
(If you have more information, see Fax Option Installation Procedure, pg. 7).



4. Release the two IPU [A] connectors (CN203, CN218) and the harness from the clamp [B].

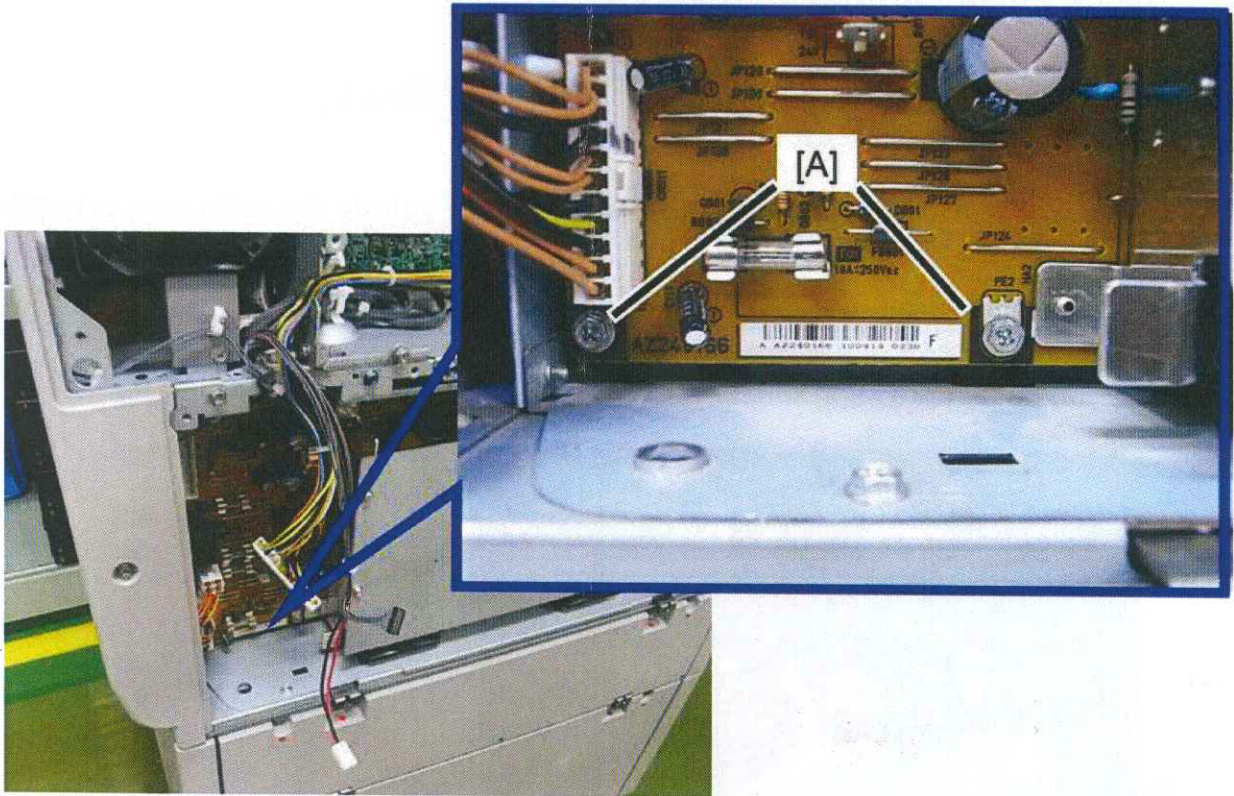


5. Release the PSU connector [A] (CN912).

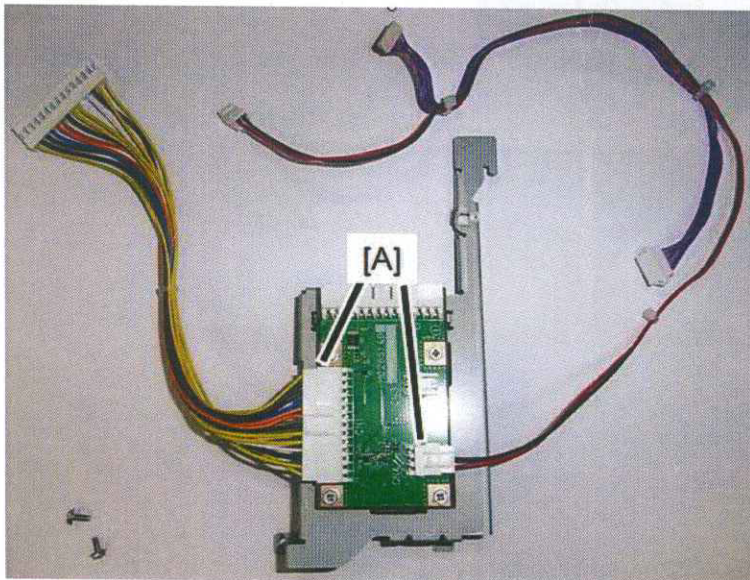
Model: Z-C1

Date: 16-Apr-15

No.: RM028049

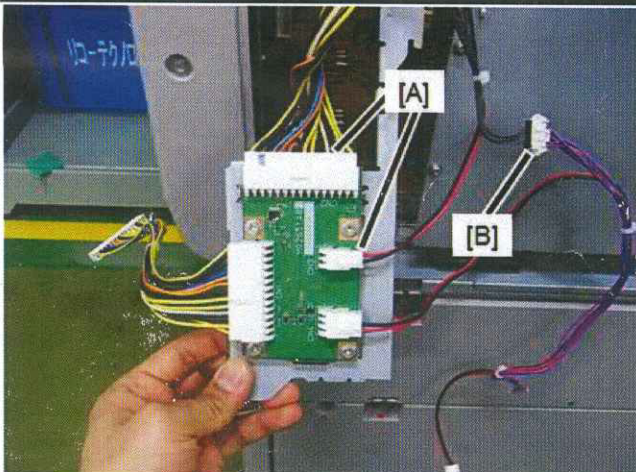


6. Remove the screw [A].
Note: This screw will not be used again.

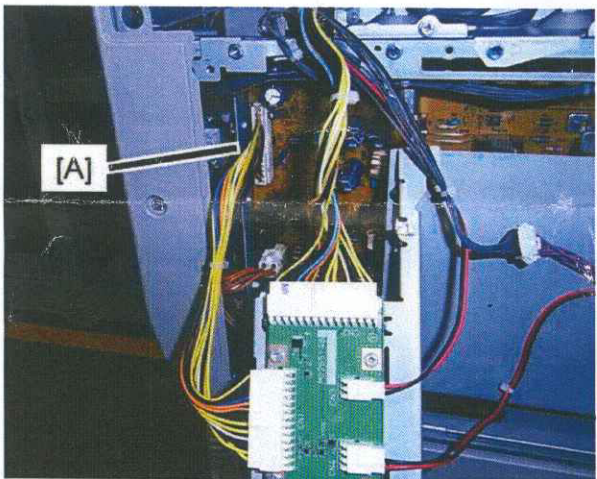


7. Connect the two connectors to the connectors on the PCB [A].

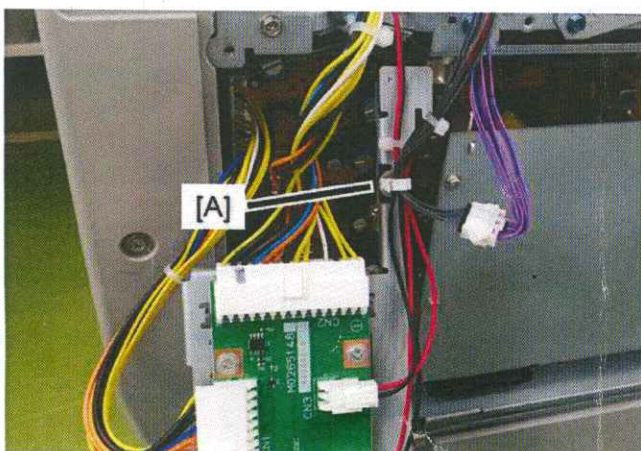
Model: Z-C1	Date: 16-Apr-15	No.: RM028049
-------------	-----------------	---------------



8. Connect the **white** connector (mainframe side) that you removed in Steps 4 and 5 to the connector on the PCB [A].
9. Connect the **black** connector (mainframe side) that you removed in Step 4 to the relay harness (harness 1) connector [B].



10. Connect the PSU harness (harness 1) to the PSU connector (mainframe side; CN912) [A].

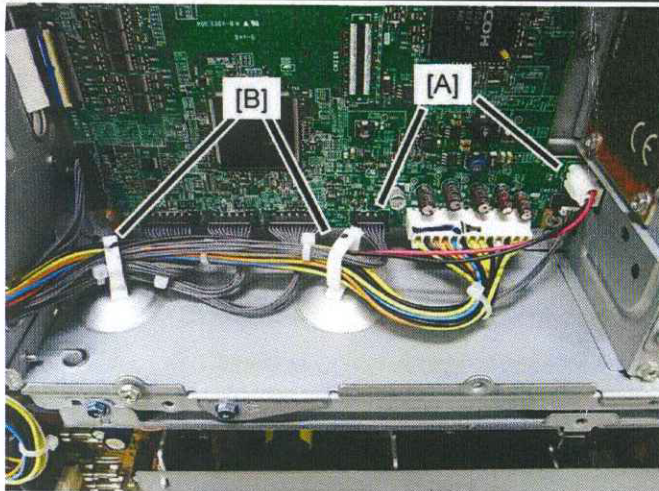


11. Clamp the relay harness (harness 2) and harness you removed in Step 4 (mainframe side) [A].

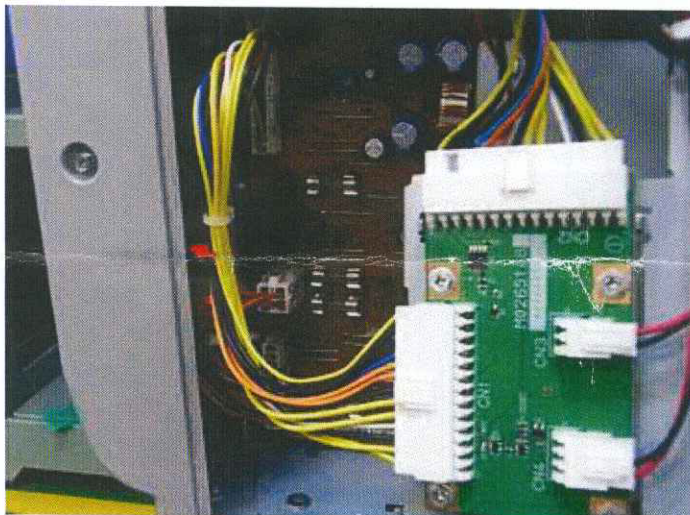
Model: Z-C1

Date: 16-Apr-15

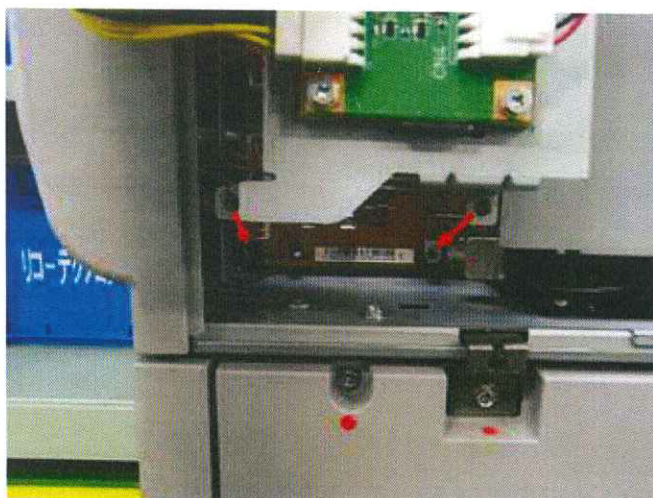
No.: RM028049



12. Reconnect the relay harness (harness 2) to the IPU connector (CN203, CN218) [A].
13. Clamp the harness [B].



14. Attach the unit while gently pushing the harness into the area inside the frame, as shown in the photo.



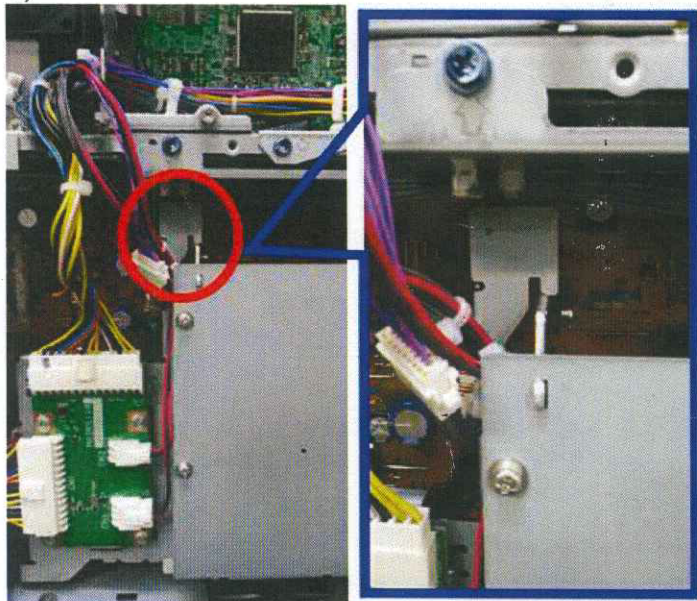
15. Secure the unit in place (Use the two screw holes).

Model: Z-C1

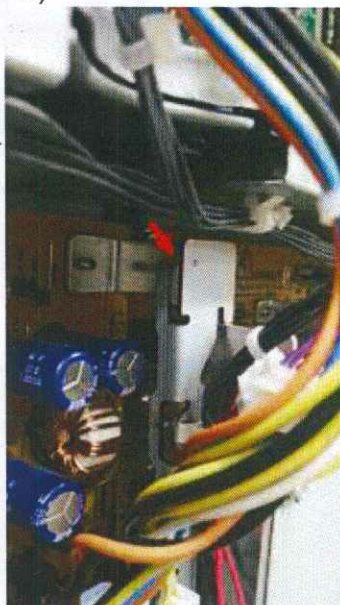
Date: 16-Apr-15

No.: RM028049

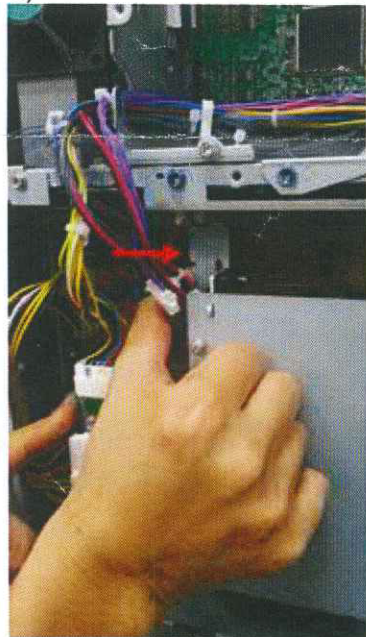
1)



2)



3)



4)



5)



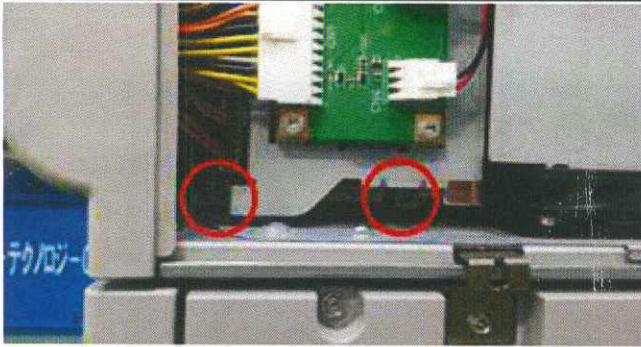
16. Hook the bracket to the machine frame.

17. Hook the part shown onto the bracket by pushing in the direction of the red arrow.

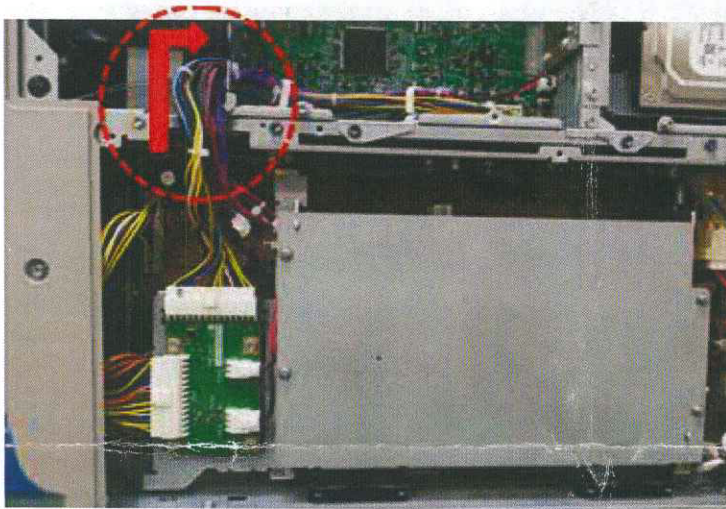
Model: Z-C1

Date: 16-Apr-15

No.: RM028049



18. Tighten the two screws included in the modification kit.



19. Route the harnesses as shown by the red arrow.

20. Reattach all parts you removed:

Note:

If the additional part is installed correctly, any of the following SCs may occur. To resolve SC condition, reinstall the additional PCB kit according to the installation procedure.

SC No.	Description
SC202	Polygon motor error 1: ON timeout
SC220	Laser synchronizing detection error: start position [K]: LD0
SC240	LD error: K
SC670	Engine start up error